

# SHAKESPEARE NORTH PLAYHOUSE



## EVENTS & HIRES

[events@shakespearenorthplayhouse.co.uk](mailto:events@shakespearenorthplayhouse.co.uk)

0151 433 7156



# SET THE STAGE FOR STUNNING EVENTS

## CONTENTS

<b>YOUR HIRE</b>	3
<b>OUR SPACES</b>	6
<b>OUR FOOD</b>	24

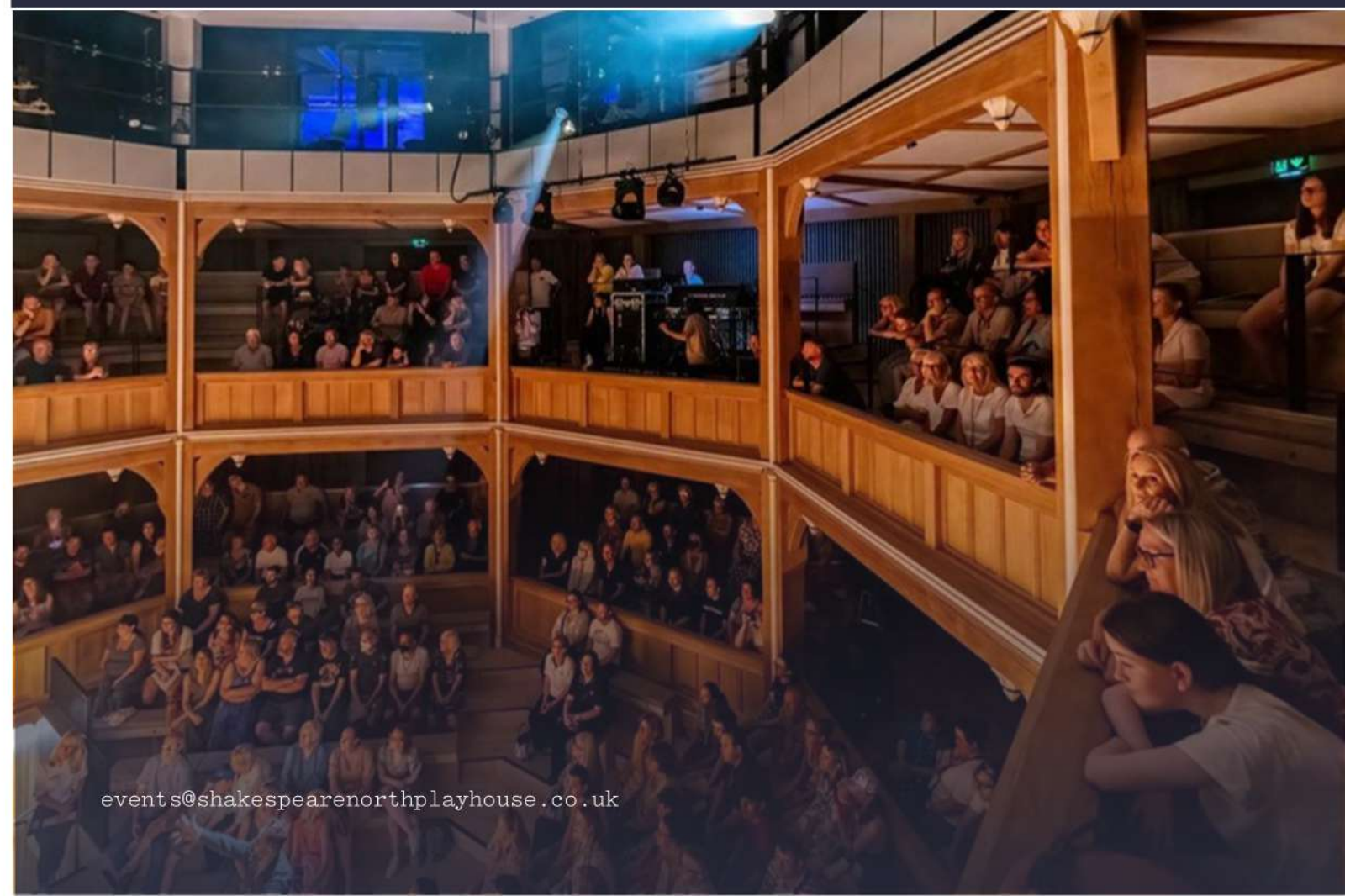
**“SMALL CHEER AND  
GREAT WELCOME  
MAKES A MERRY FEAST.”**

The Comedy of Errors

## YOUR HIRE

**WELCOME TO SHAKESPEARE NORTH PLAYHOUSE  
WHERE EVERY SPACE INSPIRES**

- flexible spaces - configured, linked or divided to meet your needs
- refreshment packages and drinks options
- space for live entertainment, bands and DJs
- bars on two floors, mobile bar carts and a late license
- in-house lighting and sound specialists
- dedicated event manager and support team





# CELEBRATIONS

Birthdays and baby-naming celebrations, leaving dos, retirement bashes and everything in between.

Our versatile, contemporary spaces and extensive range of refreshment options combine to create the perfect place to host your next get together,

Want to party on? Talk to us about an extension to our midnight bar service license.

# WEDDINGS

Let your love story take centre stage. Search 'weddings' on our website for details about getting married at the Playhouse.

weddings@shakespearenorthplayhouse.co.uk

# FILM & LOCATION

Could we be your perfect backdrop?

Talk to us about hiring our spaces for filming, podcast recording, photography and location work.

locations@shakespearenorthplayhouse.co.uk

# CORPORATE

An ideal venue for your business events, be they conferences, awards ceremonies, away days or regular team meetings.

We're also perfectly suited for corporate entertainment, work socials and special events.

All our spaces, food and drinks packages and technical support will be tailored to meet your specific needs.

Our 20 minute tour helps your delegates learn why we're here, and what we do... see p23

events@shakespearenorthplayhouse.co.uk

Contact 0151 433 7156



# OUR SPACES

Add our exceptional AV and tech offer, delicious food, the use of our bars and outside spaces, plus the services of a dedicated event manager for flawless delivery.

## DURATIONS

*Half day: up to 6 hours*  
*Full day: more than 6 hours.*

## GOING FOR THE ULTIMATE SHOW-STOPPER?

Take over the whole venue and bring the house down.

ASK US about special rates for charities, not-for-profits and Knowsley-based businesses

Contact 0151 433 7156

## FLOOR BY FLOOR

### GROUND FLOOR & OUTSIDE

Cockpit Theatre  
 The Gallery  
 Bar & Kitchen  
 Sir Ken Dodd Performance Garden

hire spaces individually  
 or linked to make any  
 event an occasion

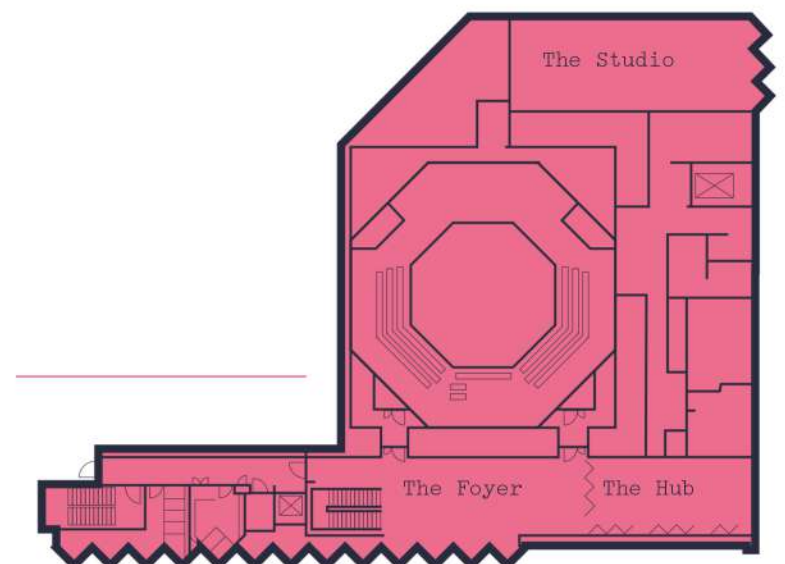
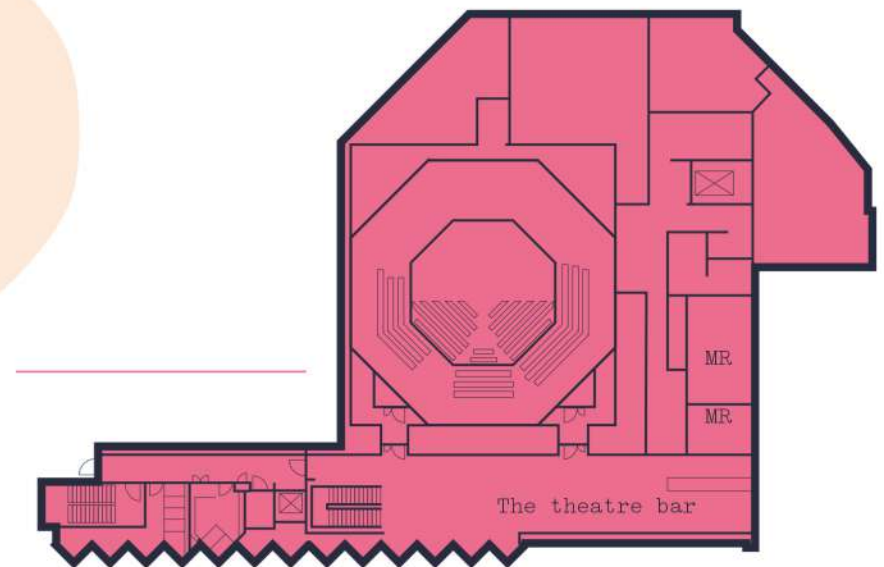
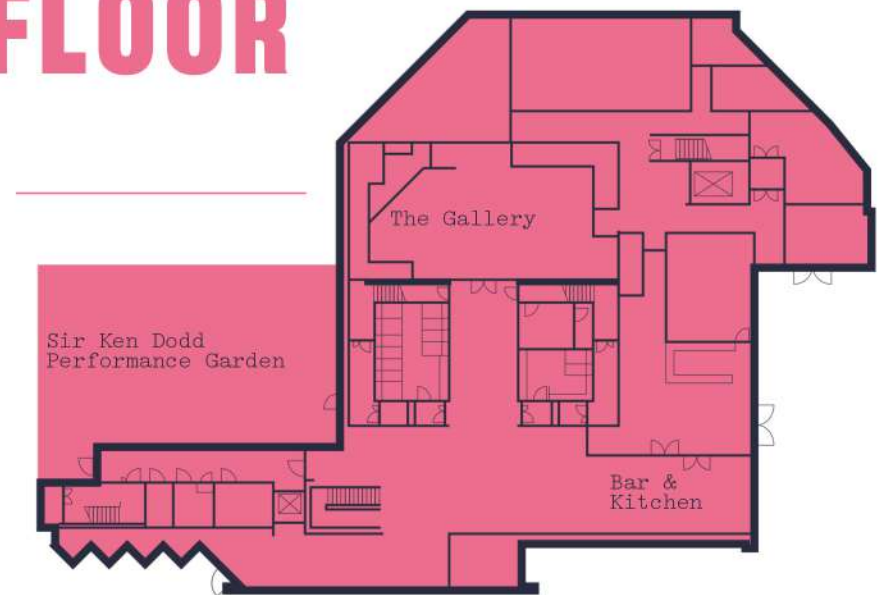
### FIRST FLOOR

The Theatre Bar  
 Meeting Rooms (MR)

book a showround -  
 we'll suggest the  
 best spaces for  
 your event

### SECOND FLOOR

The Hub  
 The Foyer  
 The Studio



[events@shakespearenorthplayhouse.co.uk](mailto:events@shakespearenorthplayhouse.co.uk)



# COCKPIT THEATRE

Great for conferences and award ceremonies, product launches or live recordings, presentations or private dining with wow factor.

To get maximum benefit from the theatre's sound and lighting set up, you'll need the help of our specialist technicians. We'll discuss the options in detail as we prepare your quotation.

## SET UP STYLE

**470**

in the round

**325**

conference style

**12**

private dining\*

£

up to 3 hours £1200

half day: £1600

all day: £3200

*\*ask us about private dining details*

## ACCESSIBILITY

Of the theatre's three seating levels, only our pit area is not completely accessible.

## IN SITU AV/TECH:

lapel microphones, 4m x 2.5m projector screen with 8k laser projector, theatre sound and lighting rigs



image: Jazamin Sinclair

Sticking to the script  
or going with the  
flow?

Hosting in this unique  
location ensures your  
event is truly  
unforgettable.



Booking this space for performance, or bringing in external lighting or sound elements? We'll provide a full tech sheet to help you plan.



# THE GALLERY

With adaptable space and two projection options, go big on presenting or add dynamic backdrops to events and celebrations.

## SET UP STYLE

**50**

theatre style

**80**

reception

**50**

dining

**21**

boardroom

**40**

workshop

£

up to 3 hours £150  
half day: £300  
all day: £600

## IN SITU AV/TECH:

PA system  
projection  
zonal lighting



## THINK ABOUT

pairing with our Bar & Kitchen for a dazzling party night, celebration, launch event or corporate entertaining space



## WHY NOT

Choose canapes and fizz to entertain clients before, during and after a show?



**“OUR EVENTS WERE A HUGE SUCCESS. THE SPACE IS WONDERFUL, AND THE TEAM WENT ABOVE AND BEYOND TO LOOK AFTER EVERY DETAIL. EVERYONE COMMENTED ON THE QUALITY OF THE FOOD AND THE EXCELLENT SERVICE.”**

Zahra Glibbery  
CEO  
Vivat Publishing





## BAR & KITCHEN

Take over our ground floor Bar & Kitchen for food and drinks, with plenty of space to mingle and socialise.

### SET UP STYLE

**150**

reception

**80**

dining

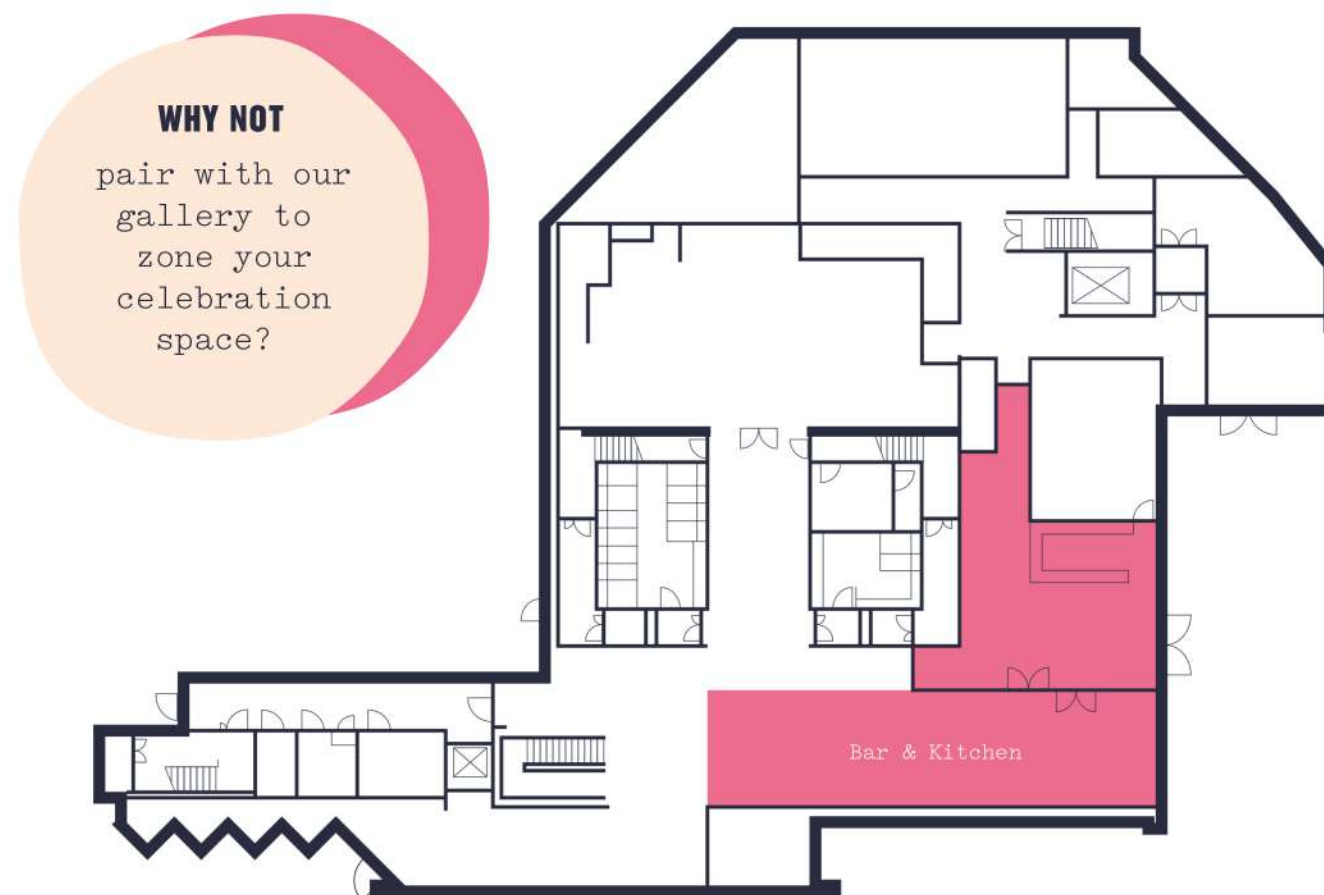
£

£600

Bar and Kitchen hires are available evenings from 6pm.

### IN SITU AV/TECH:

speaker system  
uplighters  
zonal lighting





# SIR KEN DODD PERFORMANCE GARDEN

Take the party outside! Give your imagination free reign to make of this space what you will. Our amphitheatre offers relaxed in-situ tiered seating for up to 120 people. You'll also have use of the spacious open floor area; go centre-stage for speechmaking, transform it into a dance floor or set a table for sensational outdoor private dining.

## SET UP STYLE

**120**  
theatre

**80**  
reception

£

up to three hours: £200  
half day: £400  
all day: £800

## IN SITU AV/TECH:

stage lighting  
and sound



Choose the performance garden, add our bar & kitchen and exhibition gallery for a single level, multi-area, indoor-outdoor celebration space for 250 guests!



**“IT’S A TRULY UNIQUE PLACE. THE FACILITIES ARE FANTASTIC AND THE TEAM ARE SUPER HELPFUL. IF YOU’RE LOOKING FOR A PLACE TO HOLD AN EVENT, LOOK NO FURTHER. HIGHLY RECOMMENDED.”**

Danny Houghton  
Business Development Partner  
MHA





# THE THEATRE BAR

- private bar - balcony access for taking the air -

expansive views over historic Prescot  
Perfect in equal measure for drinks receptions, networking business buffets, awards, celebrations and formal dining events. Our light-filled Theatre Bar is an endlessly adaptable space.

## SET UP STYLE

**100**

reception

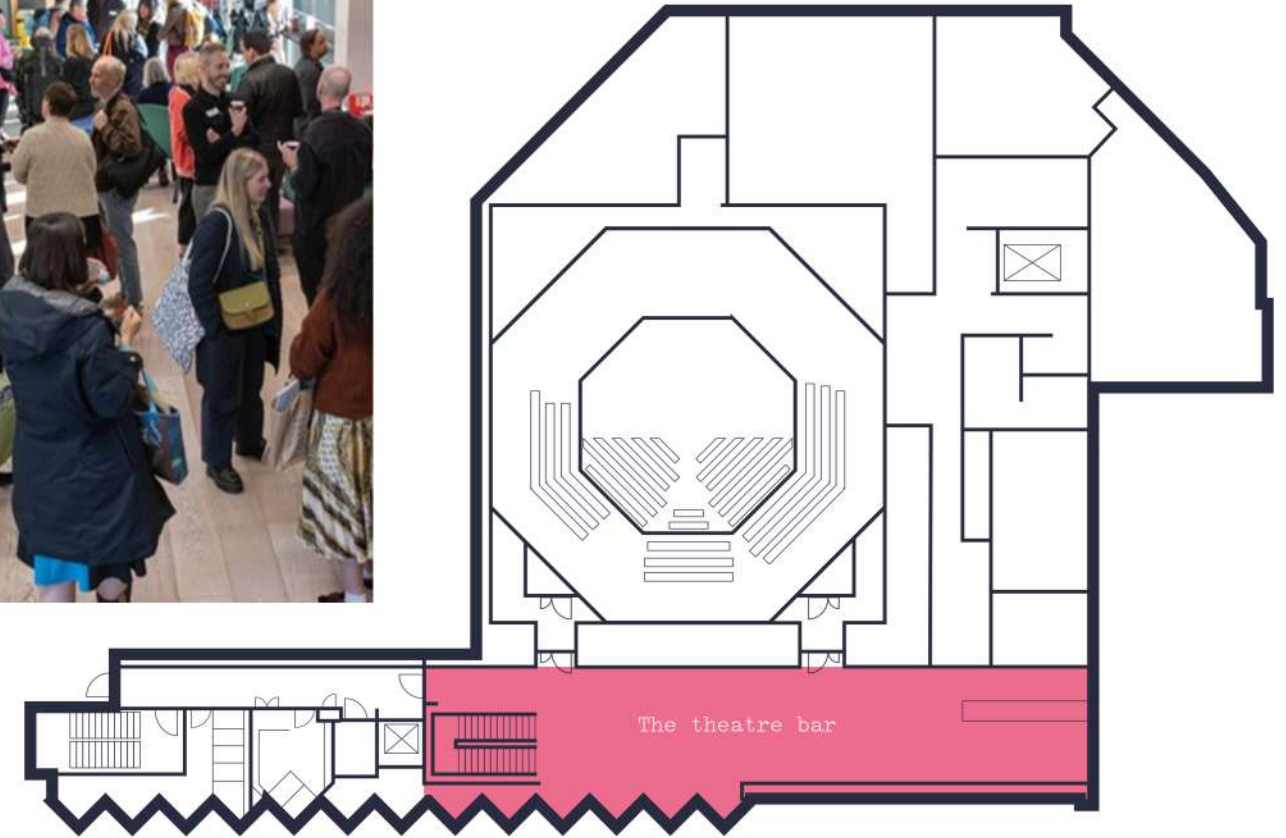
**80**

dining

£

half day from: £200  
all day from: £400

Total hire costs will vary depending on your bar requirements.



**“All our attendees commented on the great feel of the spaces used.**

**The team could not have been more helpful, and we were really impressed with their support and accommodating attitude.”**

Martin Gregory  
Franchisee Engagement Manager  
IPC EMEA





# THE HUB

Go fully open plan to take advantage of our lofty, light-filled space, or section it up to meet your specific needs. Split off, then regroup in this in this versatile area, which can be sub-divided to form up to three sections.

## SET UP STYLE

**50**

theatre style

**60**

reception

**30**

dining

**21**

boardroom

**36**

workshop

£

up to 3 hours: £200  
half day: £400  
all day: £800

## IN SITU AV/TECH:

96" tv screen for presentations and including off-site delegates.



## WHY NOT

pair with the connecting foyer to create a larger single space or sub-divide for break-out, refreshment or workshop space also great for post-meeting networking and receptions.

## HUB + FOYER SET UP STYLE

**120**

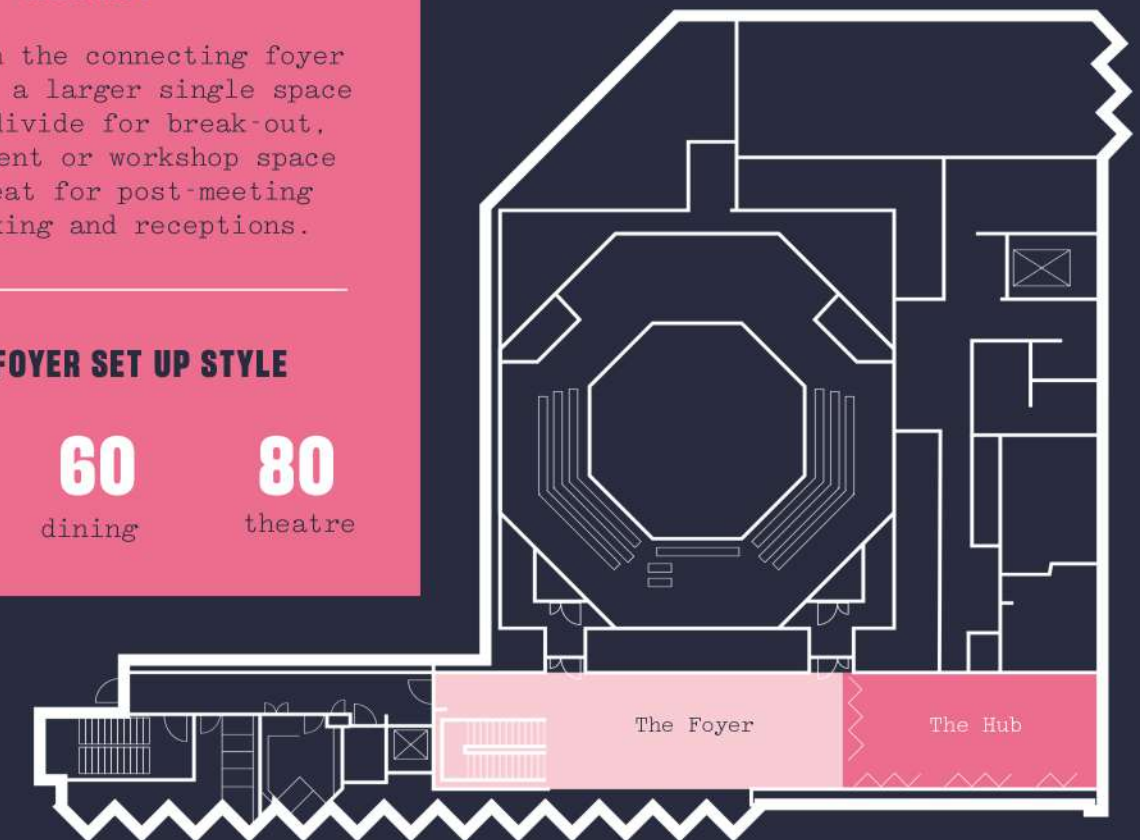
reception

**60**

dining

**80**

theatre



# THE FOYER

Make our second floor your own by adding this airy space to your venue hire, expanding your event planning options for awards, get-togethers, presentations and celebrations.

## SET UP STYLE

**60**

reception

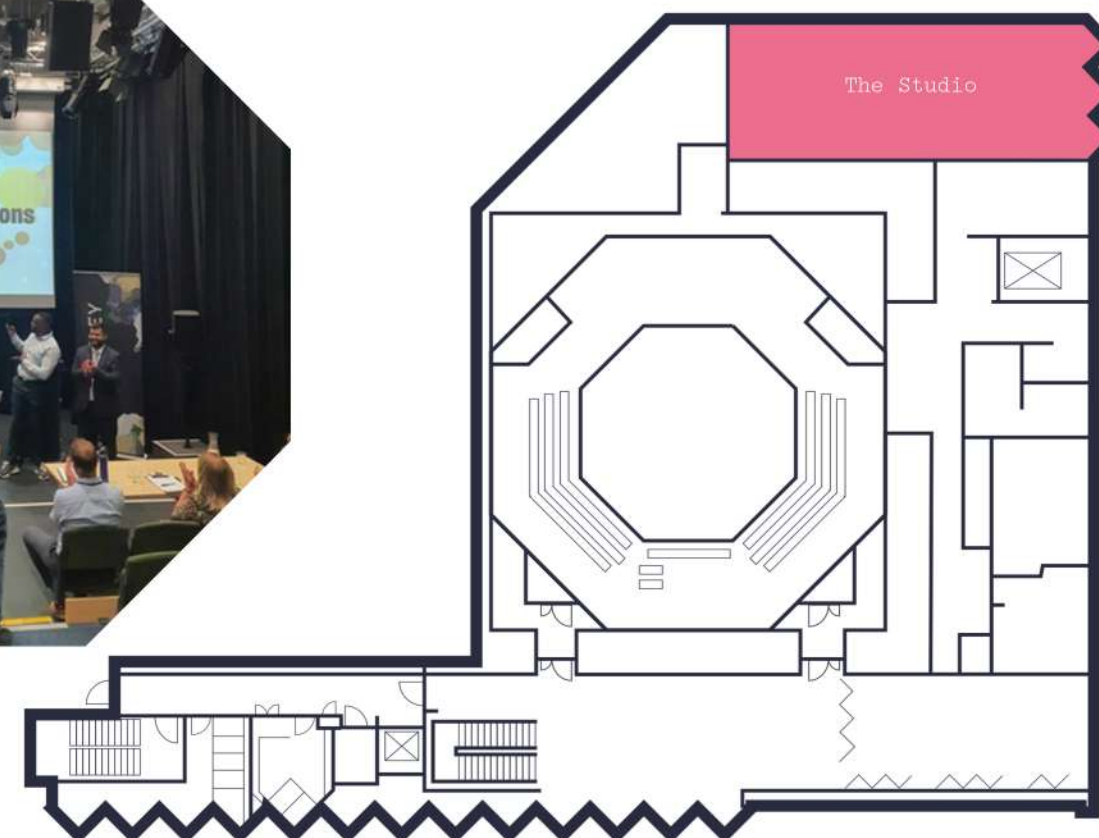
**30**

dining

£

up to 3 hours: £150  
half day: £200  
all day: £400





# THE STUDIO

With large-scale video projection, superb sound and the option of tiered seating, the studio is super-flexible. Presentations, dinners, dancing and celebrations all sit happily within this space.

To get maximum benefit from the studio's sound and lighting set up, you'll need the help of our specialist technicians. The level of support will depend on the type of event. We'll discuss this with you in detail when we prepare your event hire quotation.

## SET UP STYLE

<b>87</b>	<b>87</b>	<b>50</b>	<b>30</b>	<b>50</b>
theatre	reception	dining	boardroom	workshop

### £

up to 3 hours £200  
half day: £400  
all day: £800

### IN SITU AV/TECH:

tiered seating, stage lighting and sound, control position and audio-visual playback

A full tech sheet for our Studio is available if you are booking this space for performance or bringing in external lighting or sound elements.



# FULL VENUE HIRE

**BE BOLD, BE BRAVE. MAKE OUR SHAKESPEARE NORTH PLAYHOUSE ALL YOURS**

Got something important to say? Gathering lots of people together? Secure exclusive use of all our spaces for the ultimate whole venue takeover. Choosing full venue hire includes comprehensive technical advice during the planning stage plus a full support team during the event itself.

## 700

Maximum capacity

£

half day £6000

full day £10000

**“WE COULDN'T HAVE HOPED FOR A BETTER VENUE AND FACILITIES FOR THE EVENT.”**

Paul Morris  
Business Development Manager  
Invest Knowsley



## ‘INTERVAL’ TOURS

Hosted by one of our passionate guides, this compact tour makes a perfect break-out or re-set activity.

Explore the Playhouse's past: discover our history and Prescott's Shakespearean links.

Chat to us about how we can incorporate this into your schedule.

Tours last 20 minutes. £3pp  
minimum group size: 10.



To explore hiring Shakespeare North Playhouse for productions email: [artists@shakespearenorthplayhouse.co.uk](mailto:artists@shakespearenorthplayhouse.co.uk)

## PERFORMANCE CAPACITIES

Cockpit Theatre: 470

The Studio: 87

Sir Ken Dodd Performance Garden: 120

## MEETING ROOMS

Sometimes you just need some space.

Set your schedule to 'working elsewhere' and book one of our rooms for team get-togethers, strategy and action planning sessions or off-site interviews.

We've got two meeting spaces to choose from.

## SPACE SPECIFIC INFO

Meeting Room One: 8 people

Meeting Room Two: 20 people

£

Up to 3 hours £100

half day: £150

all day: £250

## MEET REPEAT

book our meeting rooms on three or more dates for a 10% discount





# OUR FOOD

We're constantly developing our menus to reflect new inspirations and seasonal produce.

These options give a flavour of the kind of food you will enjoy at your event.

## DAY DELEGATE

£25

Fuel your guests to keep fresh and focused throughout the day, with limitless tea and coffee top-ups at times to suit your agenda.

### GREAT START

overnight oats, pastries, seasonal fruit, juices

### LUNCH BREAK

sandwiches, savouries, sides and sweets

### AFTERNOON BOOST

traybakes and savoury snacking

## BREAKFAST CLUB

Perfect for early starts to see you through 'til lunch. Breakfast club options include tea, coffee and juice.

### CONTINENTAL START UP

£7.50

mini-pastries, overnight oats, seasonal fruit

### WAYS TO BE WELL

£7.50

energising juice shot, energy bar, overnight oats, seasonal fruit

### THE BUSINESS

£10.50

mini-pastries, overnight oats, seasonal fruit, energising juice shot and savoury breakfast muffins

## SOUP AND A SANDWICH

£7.50

A hearty bowl of homemade soup plus a filled roll. What's not to love?

Soup options:

### ROASTED TOMATO AND PEPPER

### CURRIED CAULIFLOWER AND PARSNIP

### LEEK AND POTATO

add homemade soup to any buffet option for £2

## BRING ON THE BUFFET

Break up the board meeting, re-energise the workshop or fuel up festivities. Choose from our range of casual communal dining options.

### BUFFET ONE

£9

Sandwich selection, green salad, crisps and a sweet treat.

### BUFFET TWO

£13

Enhanced deli-style sandwich selection, savoury snacks, salads and slaws, crisps, seasonal fresh fruit and a sweet treat.

## SUPREME SHARER

£20

Hearty salads, savoury sides, sweet treats and your choice of hot sharing food.

### ROASTED BUTTERNUT SQUASH WITH FETA AND POMEGRANATE

### SOUVLAKI BOARD MIX OF CHICKEN AND LAMB SKEWERS

### CHICKEN KATSU CURRY WITH JASMINE RICE

### VEGETABLE SPRING ROLLS WITH ASIAN PICKLES AND DIPS

### ROASTED MEDITERRANEAN VEGETABLE FRITTATA

Prices per person and include VAT

Talk to us about allergies and dietary requirements, we cater for everyone.



ADDED EXTRAS

Supercharge your buffet with a selection of these delicious treats. Each of our added extras are designed to serve 8 guests.

PIZZETTA PERFECTION £12.50

Platters of our hand stretched pizzette, served with a mix of house salads, slaws, pickles and wedges.

CLASSICS:  
margherita | fungi | Napoli

PLAYHOUSE:  
prosciutto and olive | n'duja | fig and blue

VEGAN:  
marinara | mediterranean | bianco

FRIES	£8
CHICKEN GYOZAS	£12
TORTILLAS WITH SALSA AND GUACAMOLE	£16
INDIAN SNACK SELECTION	£16



DESSERT POTS £2.50 per person

A selection of sweet dessert pots; vanilla panna cotta | tiramisu | lemon posset | chocolate mousse with walnut praline

CANAPES

- £12 for 3 choices, £18 for 5
- SMOKED SALMON AND CREAM CHEESE BLINI
  - SPRING PEA AND RADISH CROUSTADE
  - CRAB CAKE, PICKLED CHILLI
  - WILD MUSHROOM DUXELLE PASTRY
  - CAPRESE SKEWER
  - GOATS' CHEESE AND TOMATO TARTLET
  - PISSALADIÈRE
  - SMOKED MACKEREL AND PICKLED RED ONION TOAST
  - PISTACHIO TAHINI FALAFEL
  - RICOTTA AND GORDAL CROSTINI
  - FIG AND PROSCIUTTO SKEWER

TEA, COFFEE, CAKE £7.50

The perfect pick me up. Break for elevenses, or pause for tea at three.

AFTERNOON TEA £15

An institution! Finger sandwiches, sweet treats and fruit scones. Limitless tea. with a glass of prosecco £20

DRINKS

TEA AND COFFEE	£3
JUICE JUGS apple - orange	£2.50

Planning a celebration? Talk to us about our events drinks packages.

“I thought the venue and room were great! The biggest win for me though was the food - the vegetarian & vegan options were genuinely the best I’ve had for a while. It was so nice to have so many options.”



Prices per person and include VAT

Talk to us about allergies and dietary requirements, we cater for everyone.





# CANDLELIT PRIVATE DINING

6 course menu  
12 guest maximum

limited availability

An exclusive  
and intimate  
experience  
at the heart  
of our theatre

more information and to check availability, get in touch

[events@shakespearenorthplayhouse.co.uk](mailto:events@shakespearenorthplayhouse.co.uk)

0151 433 7156