

What to Expect Guide and Programme: Wren's World



**SHAKESPEARE
NORTH
PLAYHOUSE**



This guide is designed to **support you** to have a **great experience** when visiting **Shakespeare North Playhouse** to see **Wren's World**.

For more information on getting to the venue, parking, accessibility, food and drink, please visit the [venue website here](#)

If you haven't visited before, it might be a little tricky, so prepare in advance and give yourself enough time.

Who makes the show?



Hello! We are **Colour the Clouds**, and we write and make **shows** for **young people and their families**.

We work with **actors who bring the story to life on stage**. And we also work with **creatives who help us with music, lights, animation, props, set, costume and accessibility**.

Writer & Producer - Sarah Birch
Composer & Producer - Catherine Kingston
Director & Producer - Christabel Fox
Technical Manager & Producer - Mark Fox
Stage Manager - Sabine Sulmeistere
Assistant Stage Manager - Phil Treadwell Middle
Set & Costume Designer - Celia Perkins
Animator - Adam Orton
Projection Consultant - Andrew Crofts
Access Consultant - Ash Cox
Lighting Designer - Charlotte Stoker
Sound Engineer - Art Bailey
Additional Art Work - Saffron Broderick
Wren - Olivia Brindley
Robin - Katie Cannon



Who performs in the show?

Olivia is the actor who plays **Wren**



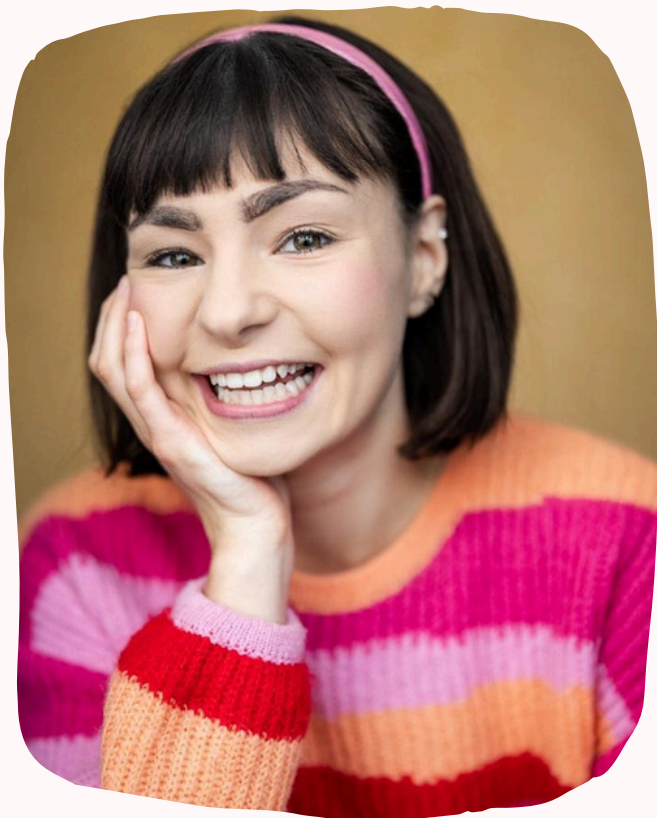
Katie is the actor who plays **Robin, Wren's sister.**

“I hope it is truthful and empowering seeing Wren regulate and stimming confidently. It is a privilege to show her practice self-soothing on stage, loyally navigating her ginormous adventures with Robin, as they do their sisterhood! The joy that is Wren letting Robin in on her world brings the sisters even closer together.” - Olivia

“I am really excited to be bringing Robin to life; I have enjoyed the challenge of working out how to portray the complexities of a young sibling of an Autistic child and the many hats they can wear. I hope I have brought a fun, kind and truthful representation of so many people's reality.” - Katie



Olivia Brindley is proud to be working with Colour the Clouds again, after having shared their original R&D for this show with Katie at the Lowry back in 2024, 'Nest'. Recent credits include: Aleena in 'Aleena's Garden' - Shakespeare North Playhouse, Colour the Clouds. She is a freelance actor with Odd Arts in their roster of immersive forum theatre plays. Olivia also recently worked on 'The Stolen Girl' - Disney+.



Katie Cannon is an Actress from Stoke-On-Trent, she trained at the Guildford School of Acting and works across Theatre, Television and Film. Theatre credits include: 'Alice in Wonderland' - New Vic Theatre. Television credits include: 'Autopsy' - ITV. Film Credits Include: 'Bad Day at the Office' - Action Xtreme. Katie is also starring in multiple short films currently in the festival circuit including BAFTA qualifying festivals.

Where is the show?



This is the **building** where you will see our **show**, it's called Shakespeare North Playhouse. It's named after William Shakespeare, a very famous **playwright**.



When you **arrive**, a **member of staff** will ask to **scan your ticket** and tell you where to go.

You might want to **go to the cafe** or **the toilet** before the show starts.



Wren's World will be performed in the **Studio**, which is on the **second floor**. You can use the stairs or lift to get there.

The studio has **lots of seats**, and you can **sit wherever you like**.

How will I experience the show?



When you come into the **studio**, there will be **lights on** to help guide you to your seat. There will also be **music playing quietly** in the background.



Use this time to **get comfy** and organise any fidget toys, ear defenders, and drinks you have with you. It's okay for you to chat to each other before the show.

You are welcome to look at the set from your seat, but **please do not cross the line and touch the set and props**.



Before the show begins, the company will come on stage to introduce themselves and explain what will happen.

The show is 1 hour long, with no interval.

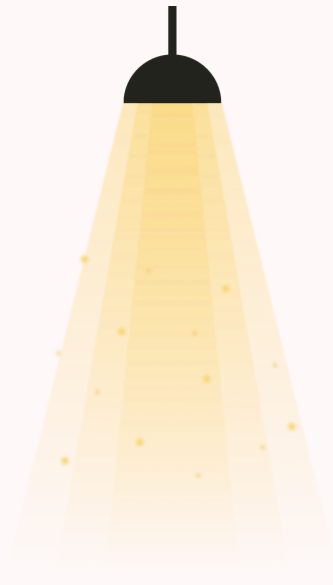
Our shows are **relaxed** which means you **don't have to sit still or be quiet**. You can move around, go to the toilet, or take a break whenever you need to.



Just come back in when you are ready!

What will the show look and sound like?

In the **show**, we use **stage lights** and a **projector**. The **lights** and **animation** help us to tell the **story**. The **lights will be bright, colourful and sometimes flash**. Some parts of the show will be **dark**, but we **won't ever turn all of the lights off**.



The **animation** shows us the **adventure inside Wren's mind**. You will see the sisters sailing the sea, exploring the jungle, and flying to space! **Sometimes the pictures might wobble or "glitch" to show that Wren is feeling upset and experiencing a Neurodivergent shutdown.**

We also use **music and sounds to tell the story**. You will hear lots of **different instruments** in the recorded music, as well as some other sounds that **help us understand how Wren is feeling**.

You can **wear your ear defenders** if you like, and **click the words below if you want to hear some of these sound effects before you come to see the show**.



[‘Thunder’](#) | [‘Shutdown’](#) | [‘Glitch’](#) | [‘Poison’](#)

How might the show make me feel?



We have made the **show** to help people better understand how **everyone experiences the world differently**, so that we can be **kinder to each other**.



When you see the show, you might feel **excited, happy, nervous and a bit sad sometimes**.

You might **laugh**, and you might **cover your ears or eyes at some bits**.

Some things in the show might **remind you of your life and how you feel**.



Sometimes in the **show, the sisters shout and push each other**. It is important to know that **the actors are only pretending**. **No one is really getting hurt!** They are just acting to show us how the sisters feel.



You can be yourself and feel however you feel at our show!

After the show, you might want to **clap and cheer, but it's okay if you don't**.



“We are delighted to welcome you to Wren's World! We have been working on this project for over two years and we believe it is the most important show we have ever made. We want to authentically represent neurodivergent young people on stage and challenge the stereotypes that many people have about Autism. We hope you enjoy watching Wren and Robin on their adventure!” - Colour the Clouds

At Colour the Clouds Theatre Company, we are all theatre makers as well as parents... we have 8 children between us! Creating Wren's World was inspired by parenting our wonderful mix of Neurodivergent and Neurotypical kids.

We want to show the real challenges of being Autistic whilst also celebrating the beauty of a Neurodivergent mind.

“When a flower doesn't bloom, you change the environment in which it grows, not the flower”. - Alexander den Heijer

We want to show that with the right conditions, Autistic young people can shine. We want to smash harmful stereotypes and encourage kindness so that everyone is valued and supported in our society. In short, we want to change the world and we think theatre is the perfect place to start!



“It is estimated that 1 in 30 people in the UK are Autistic, with up to 4 times as many boys being diagnosed as girls. Although we know this is not an accurate representation, 80% of autistic girls remain undiagnosed at age 18.” - Autistic Girls' Network

Research, Resources & Support Services:

[Autistic Girls Network](#)

[National Autistic Society](#)

[Together Trust](#)

[Children's Adventure Farm Trust](#)

[GM Autism](#)

[Starling CIO](#)

[Unlimited](#)

[The Hidden 20%](#)

[20 Stories High](#)

[Graeae](#)

Connect with us:

[Website](#)

[Instagram](#)

[Facebook](#)

Thanks to Inscape House School, The Children’s Adventure Farm Trust, Salford Parent Carer Forum, University of Salford, Dr Luisa Sanz and Arts Council England

