

# CINDERELLA

## VISUAL STORY



SHAKESPEARE  
NORTH PLAYHOUSE

SHAKESPEARE<sup>NORTH</sup>PLAYHOUSE

# CINDERELLA

Produced by  
SHAKESPEARE NORTH PLAYHOUSE

Written by  
NICK LANE

Directed by  
NICOLE BEHAN

Production Photography by  
PATCH DOLAN

## VISUAL STORY CONTENTS

Page 3: Introduction

Page 4-7: The Building

Page 8-9: The Staff

Page 10-12: The Theatre

Page 13-16: The Production

Page 17: The Cast

Page 18-24: The Story of the Show

Page 25: Extra Information

# INTRODUCTION

For this performance, there will be a more relaxed approach to making noise during the show, and coming in and out of the Cockpit Theatre (the space where the performance is taking place).

**There is a breakout quiet space available on Floor 2 in the Learning Centre.**

This visual story contains information about the play and lots of images to help you prepare for your visit. It also has information to help you find your way to the Cockpit Theatre at Shakespeare North Playhouse, where the show is being performed.





SHAKESPEARE NORTH PLAYHOUSE

# THE BUILDING

The play is performed in the Cockpit Theatre, which can be found inside the Shakespeare North Playhouse on Prospero Place in Prescott. Staff can direct you to the floor you need to enter the Cockpit Theatre (the room where the show is performed)

**Here is a picture of Shakespeare North Playhouse**





**SHAKESPEARE**<sup>NORTH</sup>**PLAYHOUSE**

# **THE BUILDING**

**Here is a picture of the entrance to Shakespeare North Playhouse**



**Here is a picture of the foyer at Shakespeare North Playhouse**



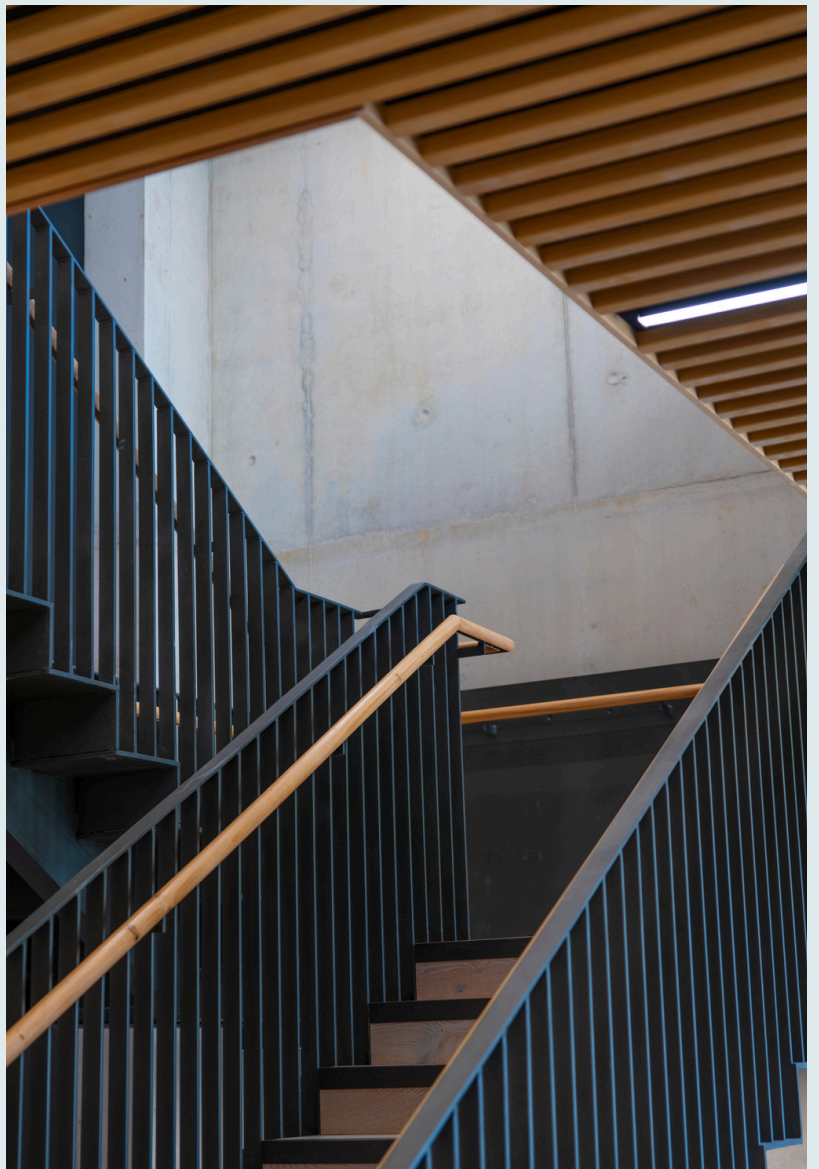


# THE BUILDING

When you arrive a member of staff will ask to scan your ticket and tell you where to go. Depending on which area of the theatre you will be sat in, you might have to go to the first or second floor.

There are stairs in front of the entrance.

There is also a lift which a member of staff can direct you to.





# SHAKESPEARE NORTH PLAYHOUSE

# THE BUILDING

Here is a picture of the first floor



Here is a picture of the second floor





# SHAKESPEARE NORTH PLAYHOUSE

# THE STAFF

Here are some pictures of some of our Visitor Experience Assistants. A Visitor Experience Assistant is someone who works at the theatre and is available to help.

## At The Front Desk



## At The Bar and Kitchen



# SHAKESPEARE<sup>NORTH</sup> PLAYHOUSE

# THE STAFF



Our Visitor Experience Assistants will be wearing t-shirts that look like this. They will be around the foyer and inside the Cockpit Theatre, and will be happy to help if you need assistance.



## Not all staff will be wearing these t-shirts

This is a photo of Richard, a Visitor Experience Manager. He won't be wearing one of these t-shirts but will be in the building and able to help you and answer any questions.





# THE THEATRE

The Cockpit Theatre is where the performance will be taking place. It has three levels. You may be sitting very close to the stage or you may be quite high up and looking down on the stage. You will have some time before the show starts to find your seats and get comfortable.

The Pit is on the Ground Floor.

The Lower Gallery is the First Floor.

The Upper Gallery is the Second Floor.

**Here is a picture of inside the Cockpit Theatre**



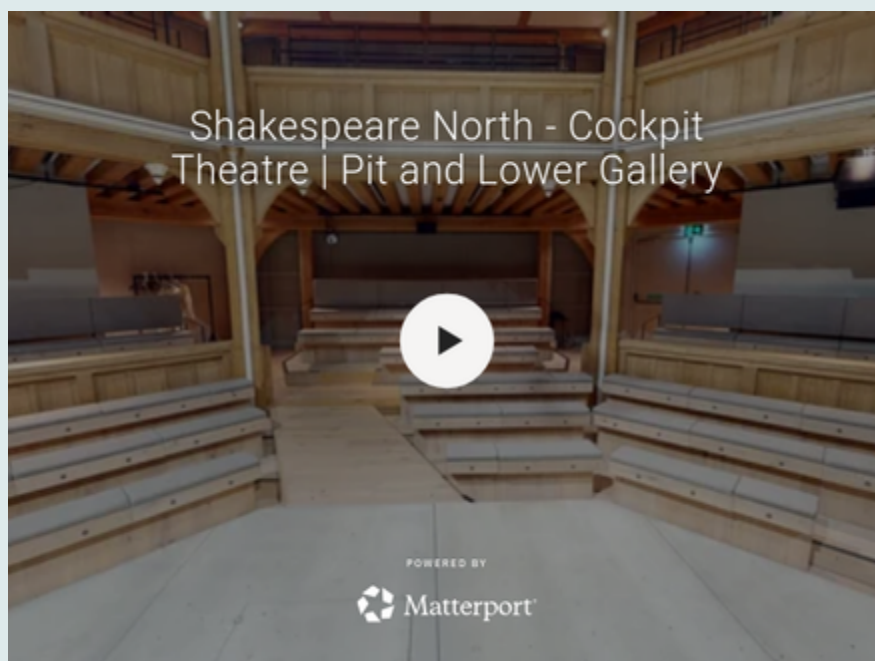


## THE THEATRE

- You will need your ticket to get into the Cockpit Theatre.
- You may need to wait in the foyer before the show starts.
- Other audience members may be waiting there to watch the show as well, so it might be busy.

Doors to the Cockpit Theatre will open 20 minutes before the play begins. When you go to the Cockpit Theatre, a Visitor Experience Assistant will look at your ticket and tell you where your seat is. A Visitor Experience Assistant is someone who works at the theatre and is available to help.

We are very excited to show the Cockpit Theatre in VR! This allows you to view the Cockpit Theatre's seats, stage and layout.



SHAKESPEARE NORTH PLAYHOUSE

# THE THEATRE

When you enter the Cockpit Theatre, you will be able to see the stage (the area where the actors perform the show) and the seats where the audience sits. At the end of the show, the audience will clap to say thank you to the performers.



**SHAKESPEARE<sup>NORTH</sup> PLAYHOUSE**

# **THE PRODUCTION**

## **RELAXED PERFORMANCE DATES & TIMES:**

**Friday 19<sup>th</sup> December at 1pm**

**&**

**Monday 22<sup>nd</sup> December at 6pm**

The theatre space will be open 20 minutes  
before the start time.

---

## **LENGTH OF THE PERFORMANCE:**

**Act 1 is 55 minutes long**

The interval is 20 minutes long - (an interval is a  
short break in the show)

**Act 2 is 55 minutes long**



# THE PRODUCTION

You can leave the auditorium at any point during the show, and when you're ready to go back in, an Usher will let you back in at a suitable moment.

If you need to take a break during the show, you are welcome to go out into the foyer area or quiet breakout room. The quiet breakout room will be in the Learning Centre on the Second Floor.

**This is a picture of the Learning Centre**



# THE PRODUCTION

## Guidelines

You are welcome to use your devices such as phones and tablets during the performance. You might want to follow along with this guide during the show.

Please don't film or take photographs of the actors as this can make them nervous or worse, forget their lines.

# THE PRODUCTION

## Trigger Warnings

At points during the production, there will be:

Loud sudden noises and music

Sound effects

Flashing lights

Trapdoors and sudden appearances

Smoke effects

Characters expressing anger and sadness

Characters moving through the audience

Audience interaction (but you don't have to get involved  
if don't want to)

You can cover your ears, or you can use ear defenders.

You are welcome to bring your own ear defenders or  
ask a Visitor Experience Assistant who can provide you  
with a pair.



SHAKESPEARE NORTH PLAYHOUSE

# THE CAST

The actors in this play will be multi-roling. Multi-roling is when one actor plays more than one character.



**Tia Larsen**

Tia is playing Usher & Cinderella.



**Emma-Grace Arends**

Emma-Grace is playing Mandy, Herald & Jessica Queen of Widdnessica.



**Emma Bispham**

Emma is playing Chief Fairy, Mum & Filania.



**Thomas Cotran**

Thomas is playing Charming, Ratface, & Prince Flarf.



**Elliott Kingsley**

Delightful, Blob, Dad, King Dean & Pumpkin.



**Charlie-Mae McKeivitt**

Charlie Mae is the Walking Understudy, which means that if one of the actors can't perform, she steps in.

# SHAKESPEARE NORTH PLAYHOUSE

## THE STORY OF THE SHOW

### ACT 1

#### Scene 1 – Song #1 “Black Magic”

We meet Chief Fairy, Charming and Delightful as they review Mandy’s final wish test to see if she’s ready to become a full-time Fairy Godmother. To explain what happened, Mandy magically transforms an Usher into Cinderella and begins the story.

#### Scene 2 – Song #2 & #3 “Ain’t No Mountain High Enough” & “Time Will Tell”

We learn about Cinderella’s parents. Her mum leaves on a sailing adventure and never returns, and later Cinderella discovers that her dad is remarrying and is then sent to prison.

#### Scene 3 – Song #4: “Common People”

Cinderella meets her new stepsisters, Ratface and Blob, who immediately argue with her. Their mother, Filania (the Evil Stepmother), joins in and bullies Cinderella.



# SHAKESPEARE NORTH PLAYHOUSE

## THE STORY OF THE SHOW

### Scene 4 - Song #5 "Somebody to Love"

In Crosbinia, Queen Jessica and King Dean tell Prince Flarf he must marry to save the kingdom, but Prince Flarf cares more about his horse Malcolm. They plan to visit nearby kingdoms and host grand parties to help him find a wife.

### Scene 5 – Song #6 "Survive"

Ratface, Blob and Filania prepare for the royal ball and refuse to let Cinderella attend. Cinderella needs access to the prince's maps to search for her missing mum.

### Scene 6 – Song #7 "I'm Every Woman"

Mandy appears as Cinderella's Fairy Godmother. She gives Cinderella a dress, carriage and glass slippers, sending her off to the ball.

### Scene 7 – Songs #8, #9 & #10 "Ball Intro Medley", The Pibble & I Gotta Get Through This"

The royal ball begins with lively music and audience participation. Cinderella and Prince Flarf share a magical dance. But when the clock strikes midnight, she must run—losing one of her glass slippers on the way out.





# SHAKESPEARE NORTH PLAYHOUSE

## THE STORY OF THE SHOW

### INTERVAL





# SHAKESPEARE NORTH PLAYHOUSE

## THE STORY OF THE SHOW

### ACT 2

#### Scene 1 – Song #11 “Wings”

Back home, Mandy excitedly questions Cinderella about the ball.

#### Scene 2

Mandy realises she said a spell incorrectly. A living pumpkin appears and races around the room. Cinderella and Mandy try unsuccessfully to catch it.

#### Scene 3

After the chaos, they discover the glass slipper is missing. Hearing Filania, Ratface and Blob approaching, Mandy hides under a cloak.

#### Scene 4

Filania and the stepsisters describe the mysterious girl who stole the show at the ball, unaware it was Cinderella. They continue tormenting her, even attacking with baguettes, but Mandy magically reverses the blows. A slapstick sequence follows. Cinderella and Mandy escape, but Filania finds Mandy's wand and realises Cinderella was in fact the girl at the ball.

# SHAKESPEARE NORTH PLAYHOUSE

## THE STORY OF THE SHOW

### Scene 5

Queen Jessica and King Dean discuss the ball and their plan to find the mystery girl who they think was a perfect fit for their son. Prince Flarf and Malcolm the horse joins them.

### Scene 6

The Herald reads a proclamation announcing a kingdom-wide search for the girl who fits the lost glass slipper.

### Scene 7

Filania confronts Cinderella, exposes her for attending the ball, and uses Mandy's wand to banish Cinderella to the land "beyond beyond."

### Scene 8

Cinderella and Mandy are being spun around as they are transported to the land "beyond beyond" and Cinderella ends up in a different version of Prescott. Cinderella finds her mum there and they discuss how Cinderella can return to Prescottisia.



## THE STORY OF THE SHOW

### Scene 9 - Song #12 'Turn Back Time'

Father Time arrives. He agrees to "cut a stitch in time" to send Cinderella back, but the audience must help by shouting her name. Cinderella whirls through time again.

### Scene 10 - Song #13 "Bye Bye Bye"

Time has passed. Blob and Ratface admit they miss Cinderella and consider standing up to their mother, threatening to leave if she doesn't change.

### Scene 11

Ratface refuses to prepare for the prince's visit and challenges Filania, who fires magic at her using the wand. Blob agrees out of fear.

### Scene 12

The Herald arrives. Blob tries on the glass slipper—it doesn't fit. Filania forces her to pretend to be Ratface—still no luck. Prince Flarf asks the audience to say Cinderella's name and Cinderella appears, tries on the slipper, and it fits perfectly!





# SHAKESPEARE NORTH PLAYHOUSE

## THE STORY OF THE SHOW

### Scene 13

Queen Jessica expects Cinderella and Prince Flarf to marry. Flarf states he wants to choose for himself and suggests that he could marry Malcolm instead to save the kingdom!

Filania storms in and threatens everyone with Mandy's wand. The group defeats her by shouting disgusting things at her until she runs away.

### Scene 14 - Song #14 "Wings (reprise)".

Queen Jessica offers Cinderella an opportunity for her to travel to the land "beyond beyond" to find her mum and to get her dad out of prison.

### Scene 15

Mandy and the chief fairy are now discussing what happens next and Mandy is fighting her case for being a Fairy Godmother. She gets told that she will remain a fairy godmother and the show ends with the 'Pibble' dance and song.





# SHAKESPEARE NORTH PLAYHOUSE



## EXTRA INFORMATION

If you have any questions about access for this production, or if you need any help, please contact our enquiries desk on 0151 433 7156 or you can email [hello@shakespearenorthplayhouse.co.uk](mailto:hello@shakespearenorthplayhouse.co.uk).